

A newsletter from **Rossendale Trust**

RossenTales



@RossendaleTrust



@TheRossendaleTrust



@TheRossendaleTrust



@TheRossendaleTrust

www.rossendaletrust.org

December 2022

**WorkTaste
news**

-More details inside

**A wonderful
party**

-More details inside

**Christmas concert
at Oakwood**

-More details inside



**The
Rossendale Trust**



Welcome to our Christmas issue of the Rossendale Trust's newsletter.

Hopefully, this Christmas will be very different from the last couple of Christmas's - no longer being restricted by Covid -19 regulations and being able to come together with loved ones to celebrate will be wonderful for all our tenants, families and staff.

I have been out and about visiting our tenants who have all been busy decorating their homes together with the staff; the Christmas trees are wonderful, and everyone is in a good Christmas spirit.

This issue is packed with Christmas cheer and celebrations with lovely photos from the tenants Christmas party, our first one in 2 years. We have some exciting news to share with you on winning a very prestigious training award and some fantastic stories of support from our WorkTaste and Oakwood services. Also, from WorkTaste, we have a reassuring article from the boss of a well-known café in Congleton (Bear Grills) about them re-establishing their links with WorkTaste following the pandemic, reminding us of just why WorkTaste is so important.

We hope that you enjoy this issue. Merry Christmas to you all, stay safe and enjoy the festivities. See you all in 2023!

-Andrea Wright - Registered Manager & Head of Supported Living

Emily has the Chill - Factor



Emily Haworth, a tenant at the Trust has proved to us all that with determination and support, you really can achieve great things.

Emily started her ski journey in October 2018 after going to a taster session at Chill Factor. She quickly decided that she enjoyed the experience and wanted to return.

Emily was introduced to her DSUK (Disability Snowsport United Kingdom) ski instructor John Lawson. She has built up an amazing relationship with John and has progressed so well over the years under his tuition.

Initially Emily used the bi-ski (sit down skiing) which was a lot of fun – especially when she could persuade John to take her over all the bumps!

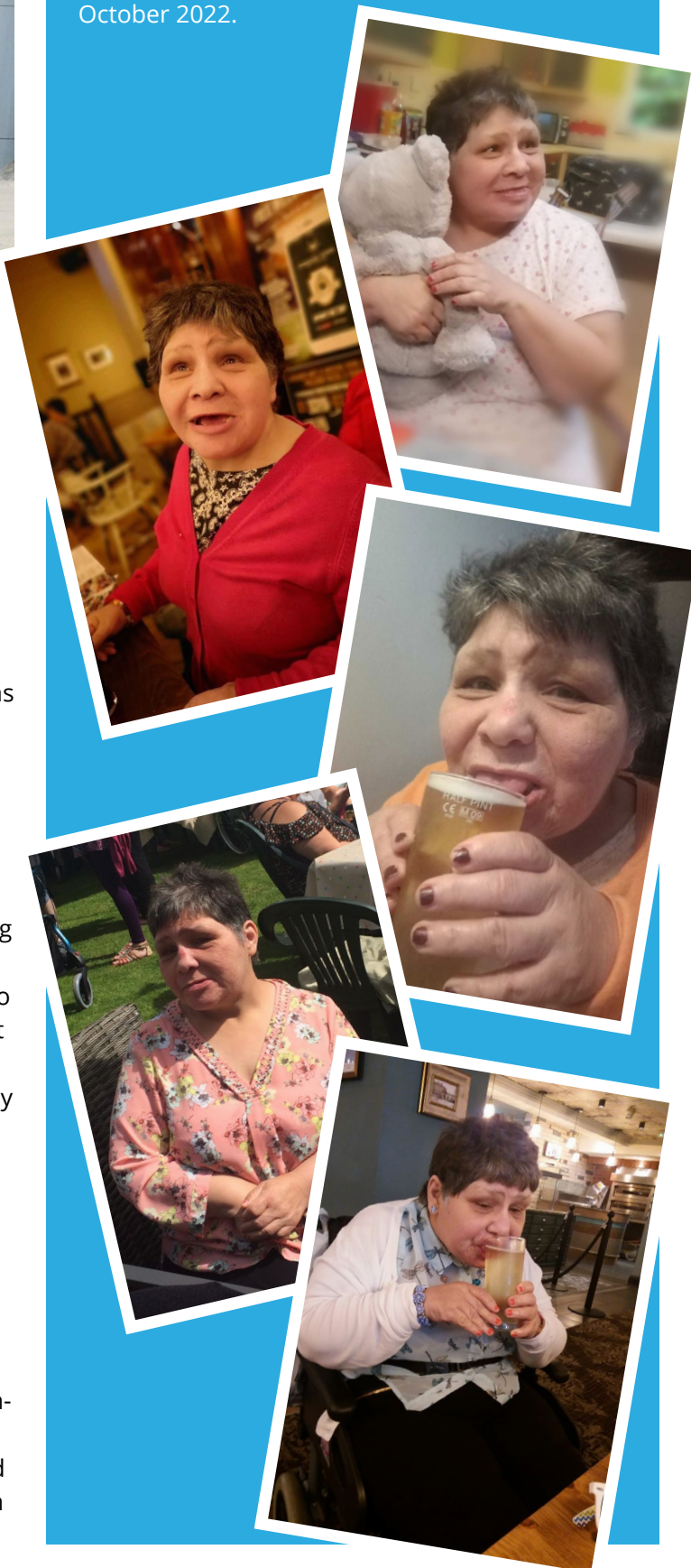
Emily quickly progressed onto stand-up skiing; starting on the nursery slope where she learned how to side-step up the slope and ski down, then progressing onto the main slope and learning how to use the button lift to the mid station. On the main slope Emily started with reigns skiing to help with her balance and slowly build up more speed – she is now skiing by herself from the mid station!

Emily is looking forward to the DSUK Christmas Ski Day with her Key Worker Gwen and has invited her Mum & Dad to come along so they can see how well she has been doing.

In 2023 Emily will be working hard to increase her confidence & speed when skiing independently. We are so proud of Emily and of how well she has progressed and can't wait to see how she continues to flourish on the slopes in 2023.

Tribute to Lynn

Lynn moved to Cavendale when it first opened in 1988 and lived there with many of her friends until March 2022. Lynn was a larger than life character with a heart of gold, and loved having a laugh and a joke. She sadly passed away on Saturday 15th October 2022.



What's it like to work at Rossendale?



In this edition we interview Rachel, who has been working as a Waking Nights Support Worker at the Trust for a number of years. Here Rachel explains what she enjoys about her job and why Rossendale is such a rewarding place to work.

What would you tell someone who was thinking of joining Rossendale as a Support Worker?

Come to Rossendale, I don't think of it as a job, the tenants are like an extension of my family. There are lots of staff benefits, they do really care about our personal and mental health and have regular well-being days.

How did you find the recruitment process?

It was a very friendly relaxed process and atmosphere.

Does The Rossendale Trust support you in your role and give adequate training?

Online training is good and easy to follow. I feel happy that the training makes me feel confident to carry out my job in a safe manner both for myself and for the tenants.

Is the Rossendale Trust a good company to work for?

Rossendale is a fabulous company to work for, after being at Rossendale for a year, I discovered I had an auto-immune disease. I was off work for 9 months and through those dark days I was supported by colleagues, my manager and HR, with regular checks to see how I was doing. I felt no pressure to return to work and adjustments were made for a short period so I could ease my way back to my full-time hours.

Do you feel your job makes a difference to someone's life?

The feeling I get when I walk through the door and my tenants are so happy to see me is indescribable. That to me proves I am making a difference. Their hugs are the best in the world. The tenants have definitely made a difference to my life for the better.

Pop-Up Returns



We returned to the Pop-Up Shop in Macclesfield's Grosvenor Centre back in November and it was a delight to be able to welcome so many familiar faces as well as new customers to the store.

We were particularly pleased to welcome Macclesfield Mayor, Cllr Fiona Wilson and David Rutley MP to the shop both of whom were able to see and talk to our WorkTaste coaches and the people working in the store.

The WorkTaste team did a fabulous job of running the shop, serving customers, stacking shelves and offering a lovely welcome to all who visited. They were supported by Oakwood media group who were on hand to print any orders we received too.

The shop was stocked full of Christmas gifts, including a wide selection of personalised gifts printed by our Oakwood media group, Christmas cards, artwork and lots, lots more.

Thank you to everyone who visited and supported us during the week and of course a special mention to all the tenants and Oakwood attendees who worked so hard all week. We hope to return in 2023 so watch out for future announcements.

A new day and a new award for the The Rossendale Trust.



Training Manager, Simon Mayo attended a prestigious ceremony at the Whitehall Banqueting House along with colleagues Marie Allan-Gray and Joanne Ellison in December in order to receive the Princess Royal Training Award.

The Trust was one of only 47 organisations in the UK to receive this accolade in recognition of its training and development programme. Many of the other companies recognised in these awards were large international corporate organisations including Santander, The Royal Navy and IBM.

Having received the award on behalf of the Trust Simon said that "It was clear Her Royal Highness was very aware of the Trust and our story. She was keen to hear more about the people we support and empathised with the struggles that the care sector is currently facing. We discussed how the award would help with our drive for recruitment by making us stand out from other providers."

It was a fabulous day for the staff who attended and we are all exceptionally proud of our achievement as the Trust's CEO, Steve Nichols explains. "For a small charitable organisation to be recognised for its excellence in staff training and development is a huge achievement and recognises the ongoing hard work and dedication of our employees to improve not only our training programme but also the services and care we provide to the people we support. To think that we can offer training and development programmes comparable to large corporate organisations make us very proud indeed."

WorkTaste update

Supported Internships – New Cohort

Supported Internships offer young people with an Educational Health Care Plan (EHCP) chance to take part in a 36-week programme within a company, supported by a WorkTaste Job Coach, with the desired outcome of them becoming independent and being offered a paid job at the end of it.

This academic year The Rossendale Trust is working alongside Cheshire College South and West and Macclesfield College to support a total of ten young people in the Supported Internship placements from kitchen work, car valeting, IT work and piano restoration to name a few. This year's placements include...

Southernsbroadstock

The Rossendale Trust is supporting Louis Povah from Macclesfield college at Southernsbroadstock in Macclesfield where he is undertaking work as a 'Warehouse Operative'. Some of Louis' tasks include moving stock, loading vans, and checking deliveries in.

Louis' WorkTaste Coach Sarah Burke has this to say... "I am surprised how quickly Louis has adapted to his new tasks and the working environment. The staff have made us both so welcome. I look forward to seeing Louis' progress and him taking on more tasks".



Alvaston Hall

Alvaston Hall is a 253-bedroom hotel spread across 4 buildings with a restaurant, pub and 2 smaller bar areas all on-site. It also boasts a spa and wellness club.



Alvaston have been kind enough to offer two placements this year which our students jumped at the chance of taking up.

Ethan is working in the reception team and another student (MW) is working with the grounds team. Both are thriving in their placements.

Ethan has enjoyed a variety of tasks since starting his placement back in September. His main task is to use the hotel's computer to book dining times and generate a number of reports. He also helps the porters with their duties, taking luggage to the guests' rooms. Monday is an extremely busy check-in day, usually with over 400 guests arriving so Ethan provides a valuable asset to the team. Ethan is now highly skilled at navigating his way to each of the 253 bedrooms!

Our other student, MW works alongside a team of 3 other groundsman and the grounds manager. As gardening is so seasonal, he has been involved in an array of tasks including planting tulip bulbs, clearing lawns

of leaves, weeding borders and planting various flowers into large planters. He also has the very important task of litter-picking the hotel grounds each Wednesday and Thursday morning to keep them looking beautiful! Since he started, we have worked on a learning journal where MW records the plants he has been working with to broaden his knowledge and help him identify the flowers and plants in the grounds.

Wendy Warbrook, the WorkTaste coach had this to say about the placements - "It is so rewarding to see both students grow in confidence and improve essential workplace skills. They are both so eager to learn, Ethan is particularly fond of IT and MW has a keen interest in trees so both have an amazing opportunity to develop their skills in their chosen field and I am thrilled to be able to support them along the way".

Siemens

For the second year running Siemens have offered placements to the Supported Internship programme. Nathan Dodgson from Macclesfield College is planning to start with Siemens Handforth Dean in December. Nathan will be working in the IT department and is really looking forward to getting stuck in!

Working together to train our WorkTasters

Following a meeting between WorkTaste Manager Colin Gillespie and the team at the Wilmslow Guild for Lifelong Learning, it was agreed that we would source some developmental training for our tenants who have their WorkTaste placements in the community cafe there.

Together we sourced an e-learning course called The Essentials of Food Hygiene and we are proud of our tenants Gareth Clifford, Lisa Bracewell, Sarah Linford, and Eleanor Dobson who have all passed the course and Robert Stanton who is currently completing his.



On the back of their successes, we decided to seek further training for our tenants whose confidence in work has grown. Their thirst for learning has led to us find new courses for those who want to take on another challenge.

Lisa and Eleanor are now embarking on a level 1 Food Hygiene certificate and Gareth is working towards Level 1 Health and Safety in the Workplace. This learning may well lead to eventual part time paid work opportunities for our tenants

WorkTaste is very grateful to the Guild for sponsoring the funding of the courses and for their interest in supporting the learning and development of our tenants. We wish Gareth, Eleanor and Lisa much success in this next stage of their training.

Julia McCoy - WorkTaste Coach

Bear Grills Café

WorkTaste are delighted to be returning to Bear Grills café in Congleton. Chris Welch has just started a new placement there.

Prior to the pandemic Bear Grills hosted a number of really successful placements with our tenants so it was really disappointing for everyone when we could no longer go there.

"COVID put everything on pause. As a business we came to a complete standstill for some time and when we were allowed to re-open after the lockdowns, we did so with a whole new business model. We took the time off to redesign and refit the cafe, so we opened with a fresher look, a new menu and ready to welcome back our customers to an improved cafe".

Supporting the WorkTaste scheme means a lot to us at Bear Grills. Pre covid we supported a few placements and a year or so on, we now feel we have the confidence to restart the WorkTaste partnership with the Rossendale Trust. We look forward to re-establishing our ties with the Rossendale Trust.

So, if you are passing Bear Grills anytime soon, please pop in and say hello and you never know you could be served by Chris!"

Mark Winder - owner

Jon is back at Carter House



Jon used to go to Carter House in Congleton twice a week and really enjoyed spending time pottering around and catching up on all the different reading materials on offer. Carter House provides a day service of various activities for people with learning disabilities. Unfortunately, Carter House was temporarily closed due to the pandemic, and it has been over two years since Jon last visited.

Jon has often asked staff at Canalside about Carter House and has made it clear that he wanted to return.

Jon has been both excited and nervous to return as there have been some staff changes and alterations around where he can and cannot visit within the building. Jon has been visiting one day a week for a couple of hours to familiarise himself with the new staff, new set up and the new people.

Jon is happy to be visiting Carter House again and is enjoying the drive to Congleton – often giving staff directions on the way.

Kylie (Group Leader - Rossendale Trust) has just been informed that Carter House is currently trying to find Jon a permanent placement again and, in the meantime, they are happy for him to pop in weekly for a visit.

Returning to Carter House was important to Jon and he really looks forward to his Friday visits.

The Rossendale Trust's Will Week

Will Week



The Rossendale Trust

23rd - 27th January 2023

In association with



As we look towards 2023, the New Year brings the perfect opportunity for you to take stock and write your will or review your existing will. Our Will Week taking place from 23rd – 27th January gives you the opportunity and support the Trust in the process.

During Will Week, we will be working in conjunction with Moneybox Wills and SAS Daniels who have kindly agreed to donate their time and expertise to help you write your Will and support the Trust. They will waive their usual fees when writing your Will and ask you to make a donation to the Trust in lieu of this.

So how does it work?

- **Choose your preferred expert**
- **Call them to make an appointment explaining that you are supporting the Trust's Will Week (See below for contact details).**
- **Attend your appointment between 23rd and 27th January (this will be at your chosen expert's office).**
- **Your solicitor will outline their fees and encourage you to donate a similar amount to the Trust in return for their services. Please remember these businesses are very generously donating their time free of charge to support the Trust and the work that we do.**
- **You can make your donation by cash, or a cheque made payable to The Rossendale Trust - simply take this to your appointment. You can also donate via the donate button on our website.**

In 2023 we will celebrate our 50th birthday and our services remain as vital today as they were 50 years ago. Your donation will ensure that we can continue to provide excellent care and support and offer a variety of services to people with learning disabilities living in our local area.

Moneybox Wills - 01625 573521 or info@mbwillsandtrusts.co.uk
SAS Daniels - Ilona Wood 01625 442149 or Ilona.wood@sasdaniels.co.uk



Christmas party

Staff and tenants get festive at the Christmas party. Early December saw us kick off our festive celebrations as staff and tenants gathered for a Christmas party. And what a party it was!

Everyone got into the spirit of the evening and there were some amazing Christmas outfits spotted rocking around the Christmas tree. As with all Rossendale parties there was a lot of dancing and a huge amount of laughter during the night.

Thank you to everyone who was involved in organising this superb event, especially Nici Rayner and Zoe Williams who went above and beyond to make the evening extra festive. Thank you to all the staff at Sodexo for hosting our party and providing superb food and service on the night.

Finally thanks to all our supporters, the party was funded from the fundraising events which have taken place in 2022 including our Fashion Show and Summer Fete. We couldn't have made it such a special evening without your support."





^{The}
Rossendale Trust

JOIN OUR TEAM AS A **SUPPORT WORKER**

**Are you passionate about supporting others?
If so, the Rossendale Trust wants you!**

Apply now and receive a £500

welcome bonus

www.rossendaletrust.org/work-for-us

Or call 07521257804

£500

*Full T&C's can be found www.rossendaletrust.org/work-for-us/TC



The
Rossendale Trust

JUST SOME OF THE BENEFITS OF JOINING OUR TEAM

- > Job satisfaction of making a huge difference in peoples lives
- > Westfield Health – health care for you and your children
- > Opportunities for career progression
- > Team Bonding fun events
- > Great opportunities to train on the job
- > Health & Well-being events
- > Flexible working options
 - > Great holiday pay
 - > Blue Light discount card
- > Life Assurance/Death in Service Benefit
 - > Auto Enrolment to The People's Pension
- > Long Service Awards
 - > Enhanced Sick Pay Scheme
- > Free annual flu jab
- > DBS paid

*Conditions apply.

Find out more at

www.rossendaletrust.org

Chelford light switch on

For the second year running Trevor Kennerley was invited to switch on the Christmas Lights at Chelford Police House. An annual event organised by the Leach family, locals from the village of Chelford gather to watch the lights being switched on.

The family do a fantastic job of decorating the outside of their home and garden for all to enjoy. The switch on is a real community event with people coming together to enjoy mulled wine, hot chocolate, hotdogs and mince pies.

Despite a slight technical hitch, the ever-professional Trevor did a brilliant job and lit up the skies on December 1st.

The family once again have asked for donations to be made to the Rossendale Trust. To date over £1000 has been raised and donations can still be made by scanning the QR code below. The lights will remain on for the festive period so if you are passing through Chelford do go and take a look and don't forget to donate!

You can also
donate by
scanning
with your
camera
phone here.



And if that wasn't enough Trevor also has a starring role in this year's Congleton Radio pantomime. Trevor will be playing the 'Magic TV Screen' in the Winter Wonderland Christmas Pantomime!

Christmas Eve at midday is the first matinee performance with an evening broadcast at 6pm the same night. The show will also be repeated on Christmas Day at 12pm and 6pm and daily at the same times up until Monday 2nd January.

Oakwood update - video gaming



Our winter Oakwood timetable (which runs from November to March) is now well underway.

Another new session has been introduced - a video gaming session which was requested by numerous people on our latest annual survey. Those attending have access to several different gaming consoles including PlayStation, Nintendo Wii, X-Box, Virtual Reality and Nintendo Switch. This gives individuals with similar interests the opportunity to come together in a social setting, play some games with friends and have some friendly competition.

Jason Blythe sat down with the group to find out what they thought.

Eleanor said "I love it! My favourite is the dancing game"

Mathew said "I like beating Jane on Mario Kart"

Adam said "I like the VR head gear, it's my favourite"

Cara said "I like the Wii"

Sam said "I like playing the PlayStation games with Mathew".



Woodwork is back!



Back by popular demand after requests from many of our recent user surveys – it's Woodwork!!

Since the start of November, the group have been getting their hands on some woodwork projects. They started in the first couple of weeks repairing the wooden doors to one of the polytunnels, they will then spend the winter making small items such as planters, bird boxes and bug hotels.

Activity Leader John said "I'm really looking forward to getting to work with the Woodwork team, making useful items from recycled wood that they have been stripping down. I've been asked a lot about doing some woodwork, so it's great to try it out. We are currently just doing one afternoon a week through the winter whilst the Horticulture side is a bit quieter"

If you would like to give the Rossendale Trust a donation simply scan here. Thank you!



Mamma Mia.... Here we finally go again!

In January 2020 the Oakwood music group decided they were going to practice and perform the ABBA based musical, Mamma Mia as their next production (due to be staged in December 2020). The small matter of the global COVID-19 pandemic put a rather large spanner in the works but the determination of the group to stage this performance remained.

So we move forward to January 2022 when rehearsals recommenced.

Through much hard work and dedication, the group have been practising like mad this year and finally, after 3 years without a production, we returned to the United Reformed Church in Macclesfield to entertain family and friends once again!

The evening was a huge success, ending with a raucous standing ovation for the cast and crew. The performance was not without its struggles, with illness tearing through the cast the week leading up to the show, resulting in 10 different members unable to make it on the night. But never a group to give up we all pulled together and put on a show to remember.

One audience member commented *"Just to say what a fabulous night the concert was. Despite losing so many of your participants it was an absolute pleasure to sing along with everyone. A lovely evening – just perfect"*

A huge well done and thank you to all involved!



Apprenticeship success

Back in September 2018 Oakwood trialled a new initiative, an apprenticeship role in Health and Social Care for a school leaver, in conjunction with the local college. Charlotte Rayner, our new apprentice had been volunteering in Oakwood one afternoon a week for the previous 12 months whilst finishing her final year at High School and had flourished during that time and really wanted to gain further knowledge and experience.

Oakwood had previously never run an apprenticeship programme but it seemed like a great fit, Charlotte could work

alongside the Activity Leaders and a tutor from the college would come to do the non-work based side with her onsite.

Charlotte worked extremely hard and week by week grew in confidence and competence, even coping with an 18 month delay due to the COVID-19 pandemic! Finally, after what must have seemed like a lifetime to her, she has completed her apprenticeship and is now thriving in the newly created role of Activity Support. We can't wait to help Charlotte to continue to develop her skills and confidence and wish her all the best for the future. A very well done and deserved achievement!

Award success

At the recent North East Cheshire Business Awards the Rossendale Trust were awarded Highly Commended in the highly contested Charity of the Year and Best Company to Work For categories.



A year in review

As we emerged from 2021 with uncertainty into 2022 it made us all even more determined to be there for our beneficiaries and to hold them at the heart of everything we do.

I am proud once again for all that we have achieved throughout this year. Our fundraising team has worked incredibly hard through the ever changing fundraising landscape. We still found ways to bring income streams into our charity.

Our new initiatives and innovative ideas included a sale and exhibition of Alan Chapmans paintings at Teggs Nose Café, spring afternoon tea at the Tytherington Club and our pop up shop in the Grosvenor Centre in March and in November. Our regular events like our ladies lunch at Mottram Hall, the Annual Fete, the tenant and staff fashion show were amazingly successful and well supported.

We continue to plan ahead and with next year being our Charities' 50th Anniversary there will be a varied and exciting programme of events with dates for your diaries coming soon.....

I would like to thank every single compassionate heart that has blessed our projects, past, present and future.

Thank you, Merry Christmas and a Happy New Year to you all.

Sue Heaven - Head of Fundraising & P.R.



We're part of the
Co-op Local Community Fund

Select us as
your cause

coop.co.uk/membership

**This month's Fantastic 5 lottery has been drawn.
It's a great way of supporting the Trust.**

The lucky winners - your cheques are on their way!

If you would like a chance to win one of 5 fantastic cash prizes - *you can sign up by visiting*

www.rossendaletrust.org/fantastic-5-sign-up-page/



The Rossendale Trust



Supported Living



Oakwood



WorkTaste

RossenTales Online is published by The Rossendale Trust. If you have any comments about the newsletter please get in touch. Write to Karl Downing at the address (right) or email karl.downing@rossendaletrust.org

VISION

To create an environment in which people can develop and grow, enabling them to have ownership of their own lives and futures.

MISSION

To meet the needs of people in our care by supporting them to live a full and meaningful life.

Rossendale Hall, Hollin Lane,
Sutton, Macclesfield,
Cheshire, SK11 0HR
Tel: 01260 252500
Email: info@rossendaletrust.org
Reg. Charity No. 1146771
Company No. 7921722

'Employer
of the Year'



Registered with
FUNDRAISING
REGULATOR



PRINCESS ROYAL
TRAINING AWARD
2022